

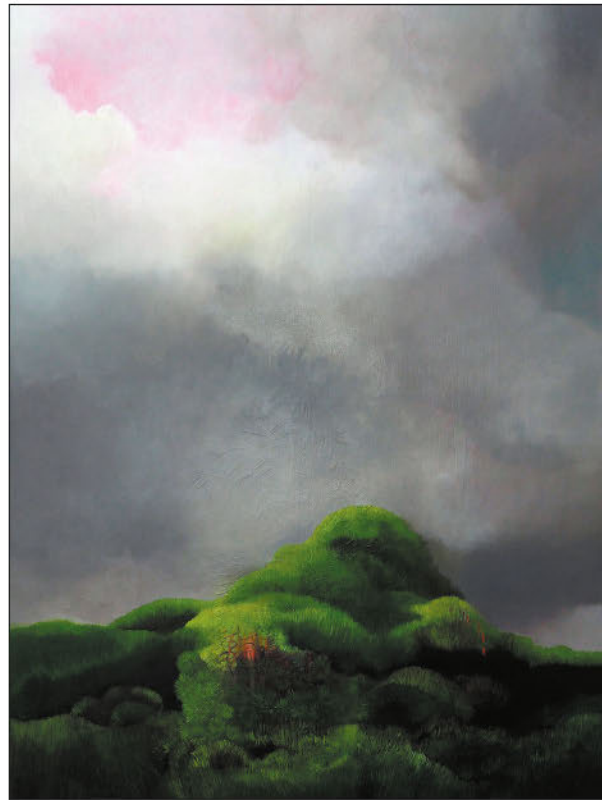
## Wilderness House Literary Review 19/1

**RESA BLATMAN** is a Massachusetts-based visual artist with work currently on view in the exhibition “Bats!” at the Peabody Essex Museum in Salem, Massachusetts, open through July 2024. Her permanent, public art installations are held at several locations throughout the U.S., her work is collected nationally, and she exhibits her work at universities and art institutions throughout the U.S. as well. Resa has several upcoming exhibitions in the latter part of 2024 (please check her website [resablatman.com](http://resablatman.com) for the listings), and her work has been reviewed in numerous publications including *The Boston Globe*, *Eco consciousness*, *Boston Society of Architects*, *Art New England*, *Supersonic Art*, *Booooooom*, among others. She received her MFA from Boston University and her BFA from the Massachusetts College of Art + Design, and she is currently an artist-in-residence at Mount Auburn Cemetery in Cambridge, Massachusetts (2023-2024). Resa’s work is represented by Childs Gallery, Boston.

**I**nformed by a rich history of painting and contemporary art making processes, my work also calls on poetry, science, and nature.

Using thoughtful and delicately painted moments, I make paintings, drawings, and mixed media, wall-mounted installations about the shifting climate that is unpredictable, yet captivating and beautiful. Beauty is a key ingredient in my toolbox, and I blend it with my reverence for, and humanity’s conflict with, the natural world and the mysteries of the universe, to compose evocative, experiential work that is both contrary and compelling. This is highlighted through my use of materials made of the earth, such as moss, gold leaf, ink, and oil paints, and human-made materials, such as plastics, and acrylics, which underscore our human contradictions and vulnerabilities. These contradictions and vulnerabilities seep into our relationships with each other to create challenges, and at times disharmony, both of which are opportunities for greater consciousness. Through a lens of beauty and gratitude for our abundant natural world, my work provides a positive encounter via its meditative mark-making, color combinations, subject matter, texture, and the remarkable way in which art can subconsciously reach us to foster inspiration, compassion, and love.

<http://www.resablatman.com/>



**Mossy Hill, 2023**, oil and acrylic on wood panel, 24h x 18w inches



**When the Darkness Recedes, 2024**  
oil and acrylic on wood panel  
24h x 18w inches





**Climbing the Hill to Consciousness, 2023**

oil and acrylic on wood panel

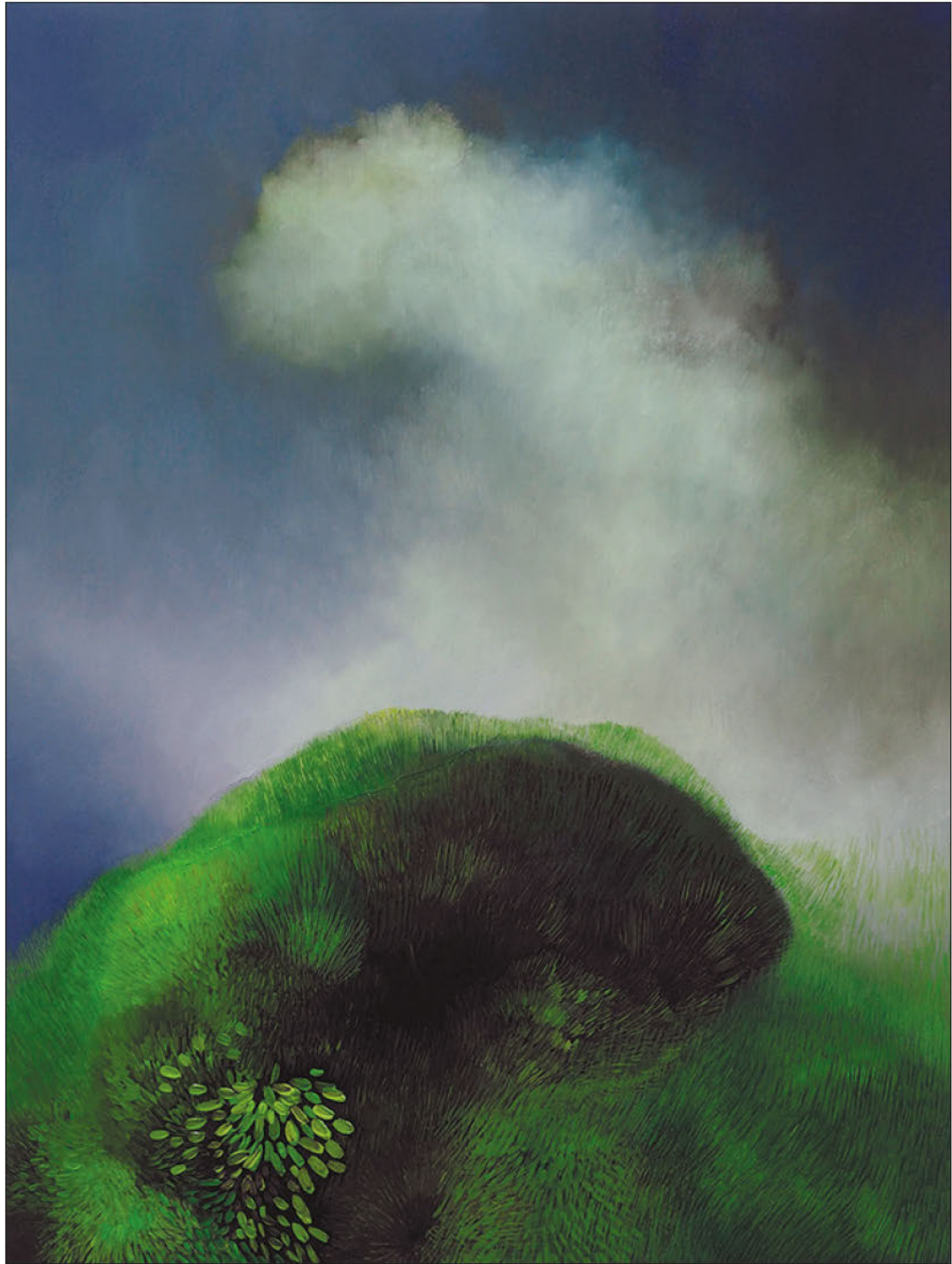
48h x 36w inches



**A Beauteous Heap, 2023**

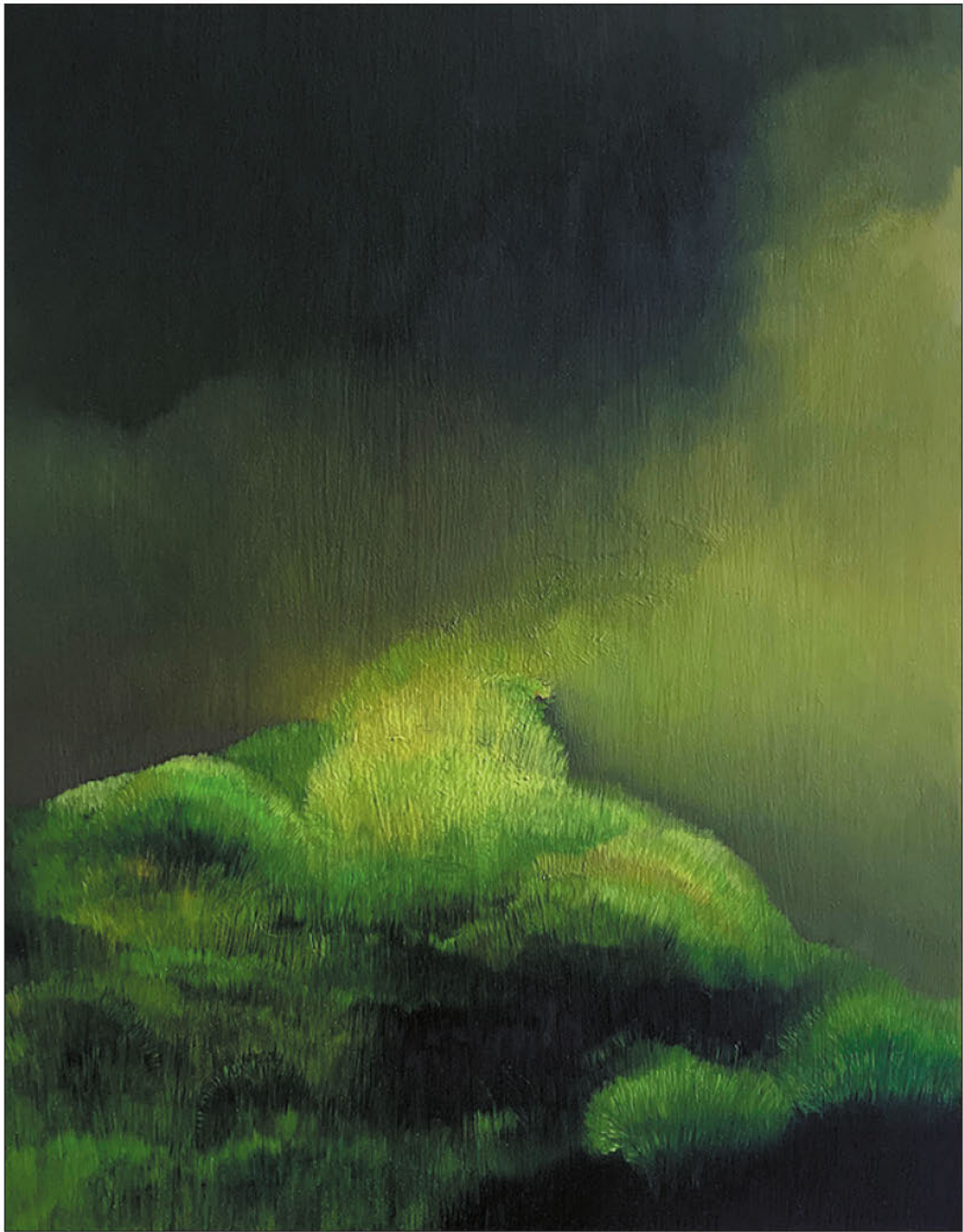
oil and acrylic on wood panel

36h x 36w inches



**Thriving in dark Crevices, 2024**  
oil and acrylic on wood panel  
12h x 9w inches

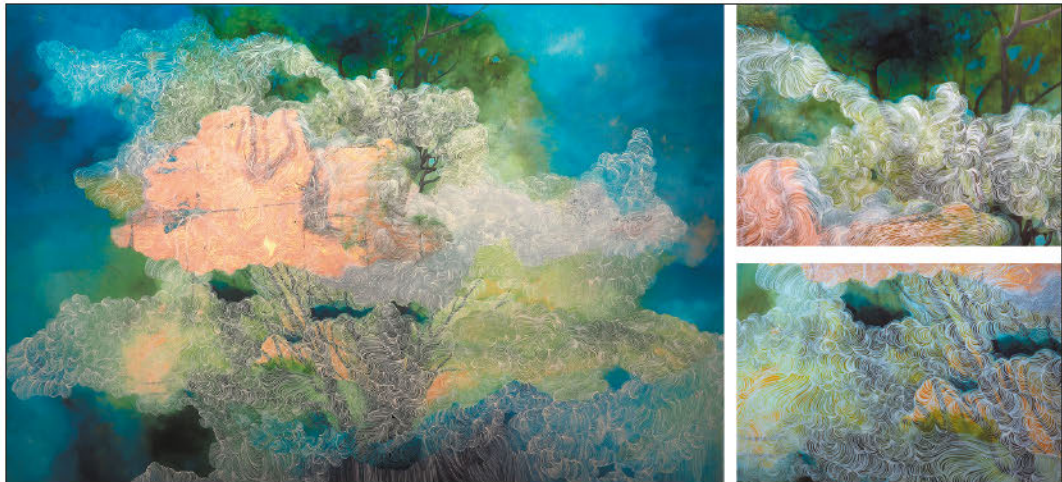




**Dreaming of Moss, 2023**  
oil and acrylic on wood panel  
10h x 8w inches

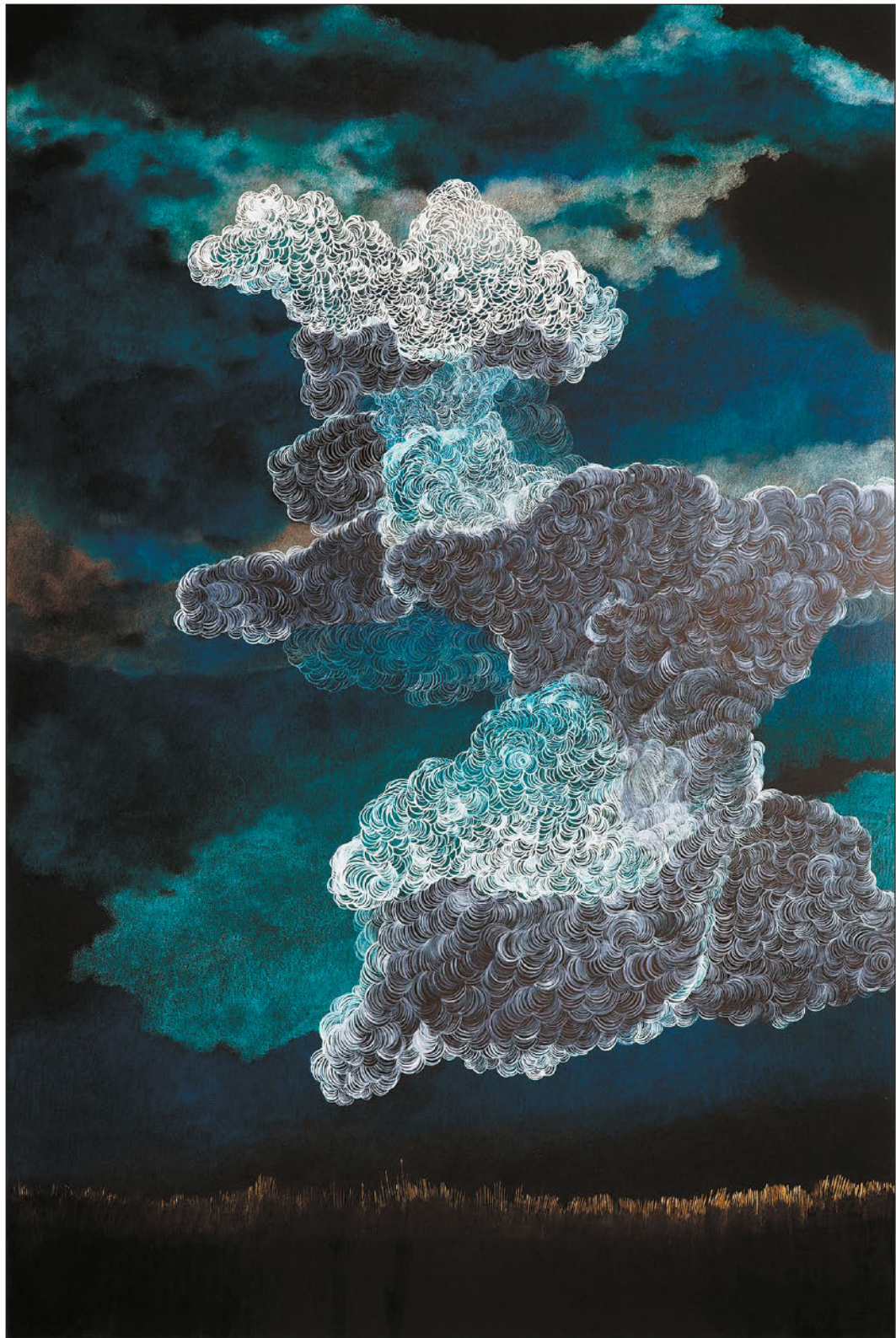


**Uncontained 1-5, 2023**  
oil and acrylic on wood panel  
10h x 8w inches, each



**Limitless, (with detailed images), 2023**  
oil, acrylic, and gold leaf on Lexan sheeting  
40h x 60w





**Storm Clouds 1, 2022**, colored pencil and ink on paper mounted on wood panels, 36h x 24w inches

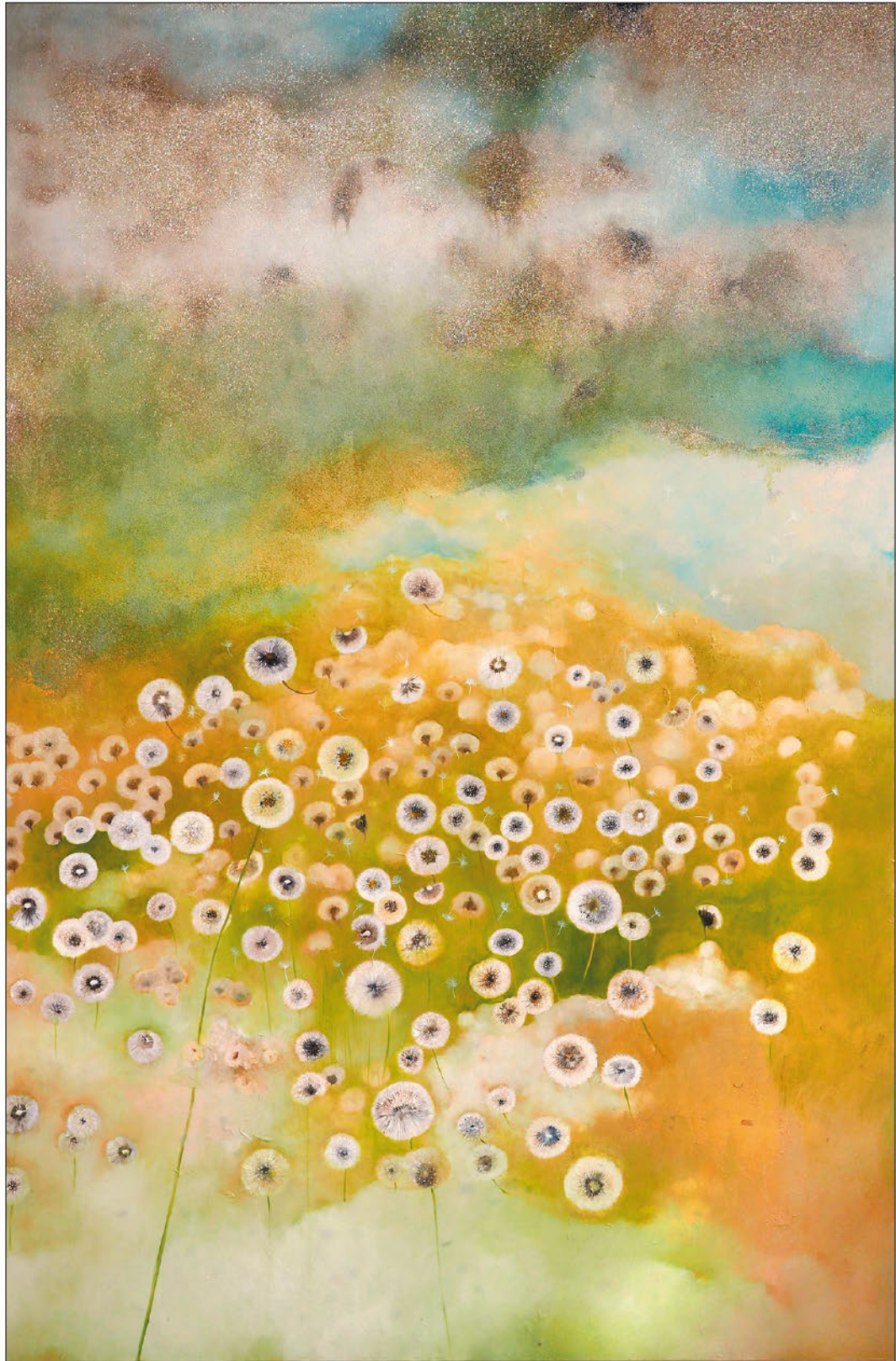




**Cloud Over a Field 2,3,5, 2022**

colored pencil and ink on paper mounted on wood panels

16h x 12w inches, each



**Dandelion Clouds, (two views), 2022, Oil, acrylic, gold leaf, and glitter on aluminum panel, 60h x 40w inches**